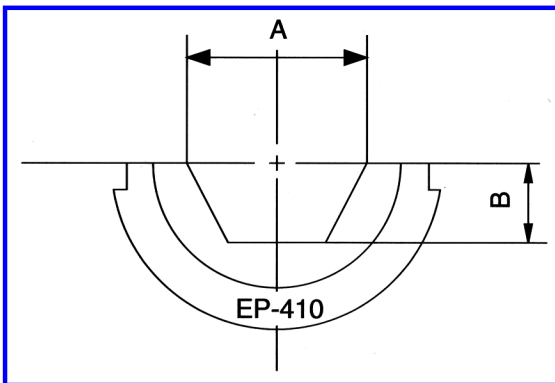
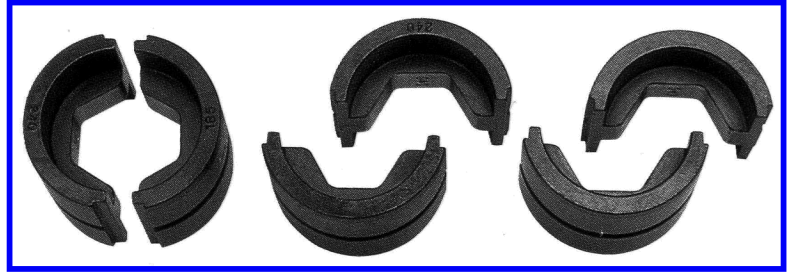
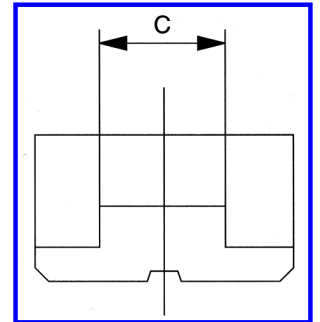


HEXAGONAL DIES.

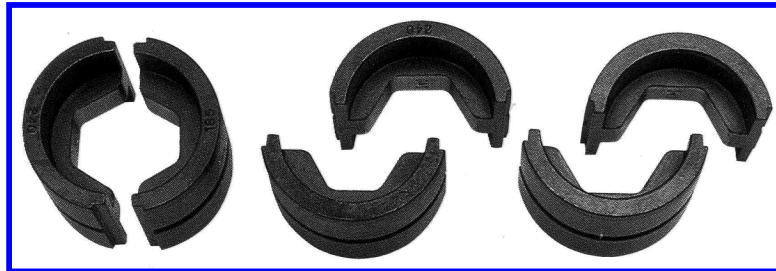


Die No.		A	B	C
UL-10	Cu 10	6.2	2.2	9
UL-16	Cu 16	7.1	2.6	14
UL-25	Cu 25	8.8	3.2	14
UL-35	Cu 35	10.6	3.8	14
UL-50	Cu 50	12.4	4.7	16
UL-70	Cu 70	14.6	5.7	18
UL-95	Cu 95	17.4	6.3	16
UL-120	Cu 120	19.4	7.1	14
UL-150	Cu 150	21.2	7.8	13
UL-185	Cu 185	24	8.6	12
UL-240	Cu 240	26.5	9.7	10
UL-300	Cu 300	30	11.0	9
	[mm ²]			[mm]



Suitable for DIN 46235 Terminals

K DIES



K Die SPECIFICATIONS				
Die No.		A	B	C
K6	Cu10	6.2	2.2	12
K8	Cu 16	8.2	3	12
K10	Cu 25	9.7	3.6	12
	Al 16			
K12	Cu35	11.8	4.4	14
	Al 25			
K14	Cu 50	13.8	5.3	14
	Al 35			
K16	Cu 70	15.8	6	14
	Al 50			
K18	Cu 95	18	7	14
	Al 70			
K20	Cu 120	19.8	7.6	14
	Al 95			
K22	Cu 150	22.3	8.7	13
	Al 120			
K25	Cu 185	24.3	9.6	12
	Al 150			
K28	Cu 240	27.8	11.5	11
	Al 185			
K32	Cu 300	31.5	13.6	9
	Al 240			
K34	Cu 400	33.7	14.5	7
	Al 300			
	[mm ²]			[mm]



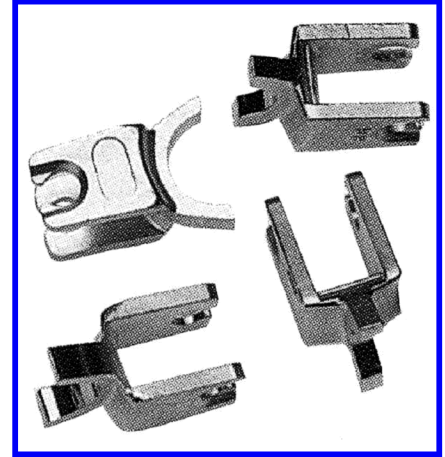
U DIES

AVAILABLE SIZES				
	U-161		U-251	
	U-162		U-252	
	U-163		U-261	
	U-164		U-305	
	U-165		U-316	
	U-166		U-317	
	U-167		U-317	
	U-168		U-327	
	U-169		U-468	
	U-170		U-490	
	U-239		U-654	
	U-242		U-655	
	U-242		U-658	
	U-243		U-659	
	U-245		U-788	
	U-247		U-K870	
	U-248		U-321	
	U-249			

W DIES

Die are a very important part of compression tools
Please be aware of suggested die number by fitting
manufacturer when fittings are purchased.

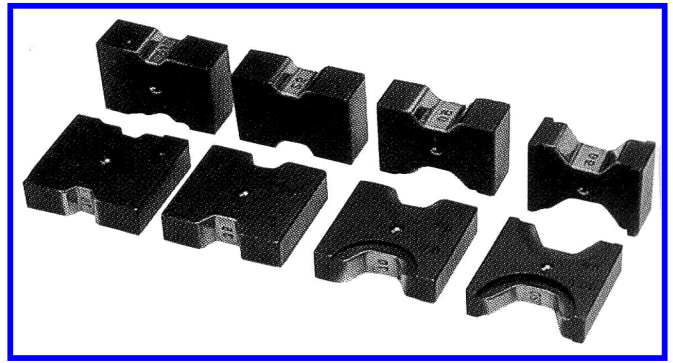
Equivalents are indicated and do not infer
That they are identical, interchangeable or
Exact duplicates.



HT58BX	W161	equivalent
HT58BZ	W162	"
HT58CB	W163	"
HT58CD	W164	"
HT58CE	W165	"
HT58CF	W166	"
HT58CG	W167	"
HT58CM	W171	"
HT58DH	W-239	"
HT58DM	W-243	"
HT58DP	W245	"
HT58DT	W247	"
HT58DW	W-249	"
HT58KH	W702	"
HT58KA	W687	
HT58G	WBG	"
HT58J	WC	"
HT58AK	WO	"
HT58AE	WK840	"
	W203	
	W-204	
	W-140	ABC
	W-173	ABC
	W-215	ABC

Beku Dies (EP-50)

Suitable for terminals with a wall thickness a little less than Din 46235 terminals.



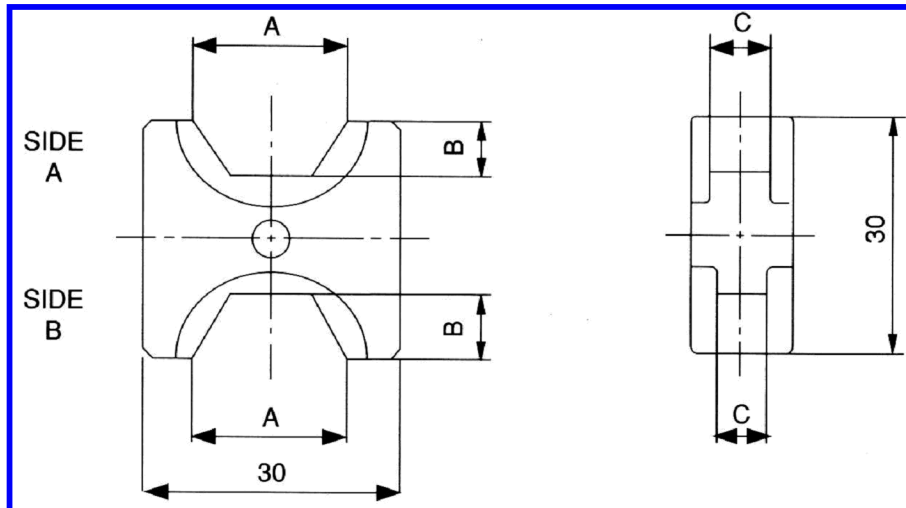
Die No.		A	B	C
10 - 16	A (10)	5.98	2.59	9
	B (16)	7.2	3.12	12
25 - 35	A (25)	8.48	3.67	12
	B (35)	10	4.33	12
50 - 70	A (50)	11.6	5.02	12
	B (70)	13.73	5.95	1
95 - 120	A (95)	15.9	6.88	10
	B (120)	17.98	7.79	8
150	A (150)	20.1	8.7	5.5
[mm ²]				[mm]

Suitable for terminals with a wall thickness a little less than Din 46235 terminals. Hexagonal Dies for Copper and Aluminium Terminals.

Die No.			A	B	C
K6 & K8	A (K6)	Cu10	6.2	2.2	12
		Cu 16			
B (K8)			8.2	3	12
K10 & K12	A (K10)	Cu 25	9.7	3.6	12
		Al 16			
B (K12)		Cu35	11.8	4.4	9
		Al 25			
K14 & K16	A (K14)	Cu 50	13.8	5.3	8
		Al 35			
B (K16)		Cu 70	15.8	6	8
		Al 50			
K18 & K20	A (K18)	Cu 95	18	7	7
		Al 70			
B (K20)		Cu 120	19.8	7.6	6
		Al 95			
		[mm ²]			[mm]

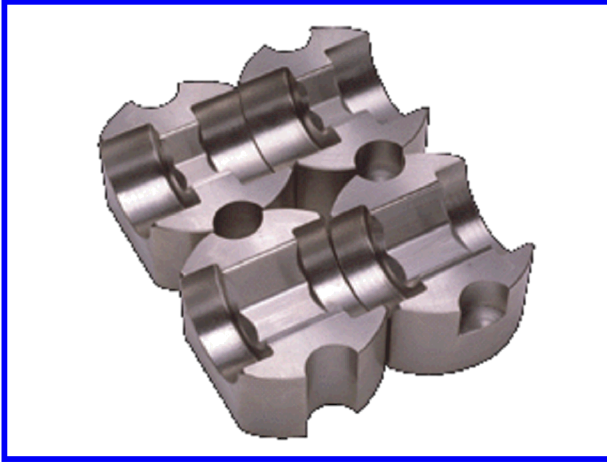
**Hexagonal Dies for copper terminals
(suitable for terminals commonly used in South Asia)**

Die No.		A	B	C
Cu 10 - 16	A (Cu 10)	6.2	2.2	9
	B (Cu 16)	7.1	2.6	11.95
Cu 25 - 35	A (Cu 25)	8.8	3.2	11.95
	B (Cu 35)	10.5	3.8	11.95
Cu 50 - 70	A (Cu 50)	12.4	4.7	10
	B (Cu 70)	14.7	5.7	8.5
Cu 95 - 120	A (Cu 95)	17.4	6.3	7
	B (Cu 120)	19.4	7.1	6
Cu 150	A (Cu 150)	21.2	7.8	5.5
	[mm ²]			[mm]



DIES.

HEXAGONAL ALCAN TYPE DIES FOR 30, 60 AND 100 TON CRIMPING HEADS.



CONDUCTOR ACSR		ALCAN Die No's			
CODE	DIA mm	ALUM.	A/F mm	STEEL.	A/F mm
WOLF	18.13	A-8	28.2	S-8	12.7
HORSE	13.95	A-9	32.3	S-9	15.2
PANTHER	21.00	A-9	32.3	S-9	15.2
* KEZIAH	19.53	A-9	32.3	S-9	15.2
BEAR	23.45	A-9	32.3	S-10	16.1
LYNX	19.53	A-9	32.3	S-10	16.1
GOAT	25.97	A-10	36.2	S-10	16.1
ZEBRA	28.62	A-11	40.2	S-10	16.1
DINOSAUR	35.56	A-13	49.7	S-12	20.2
CENTIPED	26.49	A-10	36.2	N/A	N/A
BULL	38.00	A-13	49.7	N/A	N/A